

Greenfield realization in Mexico



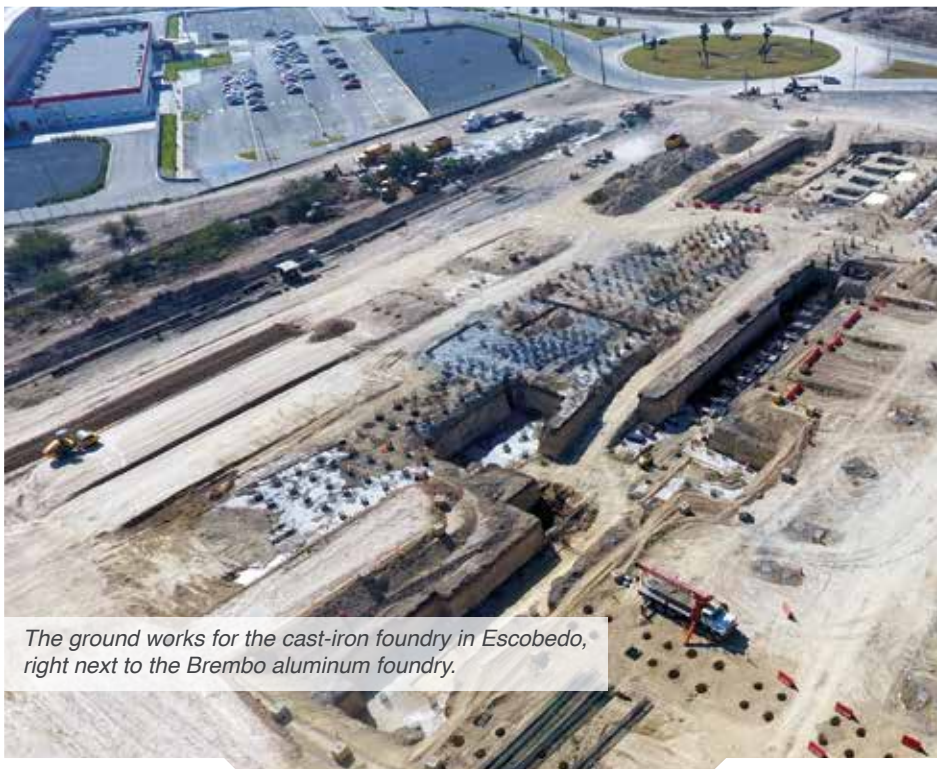
Brembo is world leader in brake disc technology. When Brembo decided to establish a new foundry in Escobedo, in the Monterrey area in Mexico, Brembo chose Gemco to be their partner for the layout design, engineering and equipment installation of the greenfield foundry.

Casting operations in Escobedo started in 2017 and the foundry produces 100,000 tons/yr of liquid metal for the making of rotors and discs. Cast products are destined to American, European and Asian OEMs with manufacturing facilities in Mexico, entirely in line with Brembo's philosophy to produce in the vicinity of their major customers.

Product: brake discs, brake drums, calipers
Metal: grey iron, ductile iron



The dynamics of a greenfield casting facility in the making, with sand plant in construction on the outside and the casting line taking shape on the inside (melting, pouring).



The ground works for the cast-iron foundry in Escobedo, right next to the Brembo aluminum foundry.

Gemco also assisted Brembo with Engineering-, Installation- and Project Management Services for an expansion of the Brembo brake parts foundry in Dabrowa, Poland. (For Brembo Poland this was already the second expansion) This 3rd production line produces also high quality ductile brake parts with a total capacity of up to 80,000 tons of good castings/yr, making the total capacity of Brembo Poland over 250,000 tons/year of brake parts.